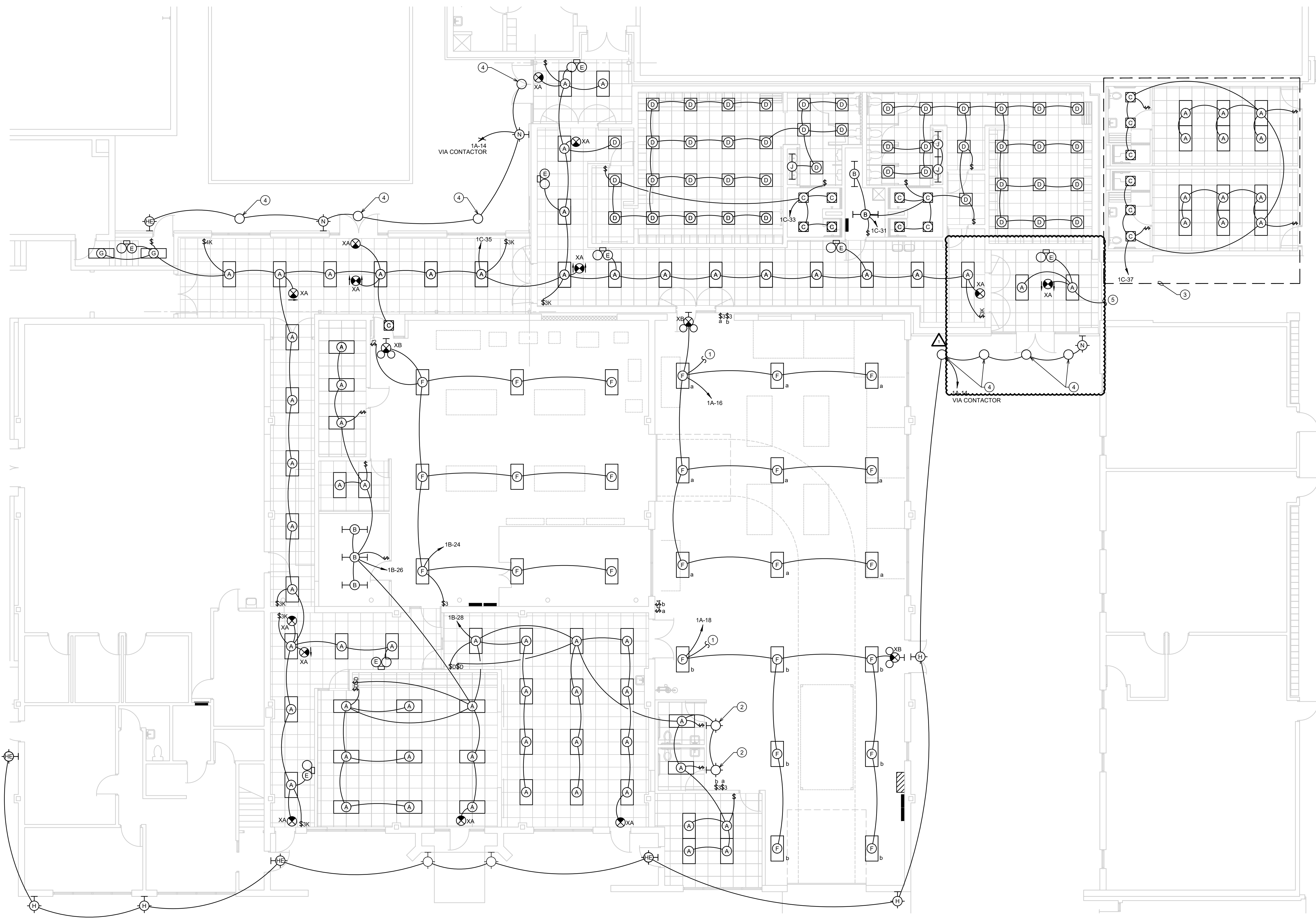


1/29/2020 8:29:22 AM
 M:\2019\19115.00 - 107 - Oxford High School Renovation\Electrical Files\19115.00 - E3.x.dwg



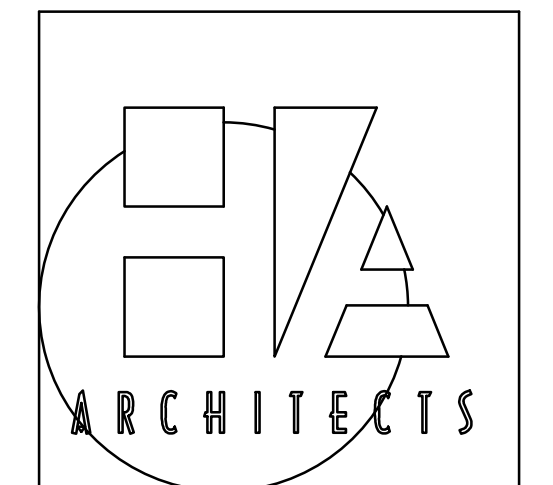
A INDUSTRIAL ARTS/STORM SHELTER PLAN - LIGHTING
 SCALE: 1/8" = 1'-0"
 NORTH

GENERAL NOTES:

- ALL CIRCUITS INDICATED ON DRAWINGS SHALL BE 20A, 120V CIRCUITS WITH (2)-#12'S AND (1)-#12 G. IN 0.5" CONDUIT U.O.N.
- LABEL ALL SNAP SWITCH COVERPLATES WITH THE PANEL AND CIRCUIT NUMBER.
- REFER TO RELATED ARCHITECTURAL DRAWINGS FOR RELATED INFORMATION.
- REFER TO THE SPECIFICATIONS FOR DATA NOT ON THE DRAWINGS.
- WALL MOUNTING HEIGHTS TO CENTERLINE OF DEVICE UNLESS OTHERWISE NOTED.
- A GROUND CONDUCTOR SIZED PER N.E.C. ARTICLE 250 IS REQUIRED IN ALL POWER, RECEPTACLE, AND LIGHTING CIRCUITS. GROUND CONDUCTORS ARE NOT SHOWN ON DRAWINGS.
- LOWER CASE LETTERS NEXT TO LIGHT FIXTURES INDICATE WHICH SWITCH THEY ARE CONTROLLED BY.

PLAN NOTES:

- TO ASSOCIATED LIGHT SWITCH BANK LOCATIONS AT MULTIPLE LOCATIONS IN ROOM.
- PROVIDE NEW WALL MOUNTED LIGHT FIXTURE OVER DOOR OF RESTROOM #313/#327. CONTRACTOR SHALL REFERENCE OCCUPANCY INDICATOR DETAILS ON ARCHITECTURAL SHEET A3.1 FOR LIGHT FIXTURE SPECIFICATION AND WIRING INSTRUCTIONS. CONTRACTOR SHALL PROVIDE ALL WIRING AND COMPONENTS FOR COMPLETE SYSTEM TO MEET THE INTENT OF THE DETAILS SHOWN ON A3.1 FOR THE OCCUPANCY INDICATOR SINGLE TOILET ROOMS.
- ELECTRICAL WORK ASSOCIATED IN THIS AREA SHALL BE PRICED UNDER ALTERNATE #6.
- LED LIGHT SHALL BE INTEGRAL TO THE METAL CANOPY. REFER TO ARCHITECTURAL PLANS FOR MORE INFORMATION.
- EXTEND TO EXISTING LIGHTING CIRCUIT AND CONTROL IN EXISTING CORRIDOR.



HANNEY & ASSOCIATES, ARCHITECTS
 1726 South Hillside, Wichita, Kansas, 67211
 Phone (316) 683-8965
 Fax (316) 684-1441
 www.haarchitects.com

2019
 OXFORD JUNIOR/SENIOR HIGH SCHOOL
 UNIFIED SCHOOL DISTRICT #358
 515 N Water St, Oxford, KS 67119

DRAWINGS ISSUED		
NO.	DATE	ITEM ISSUED
8	1/27/20	ADDENDUM #3
7	12/20/19	ISSUED FOR BIDS
6	12/16/19	99% BOARD REVIEW
5	12/13/19	99% SUBMITTAL
4	9/20/19	50% REVIEW
3	6/10/19	DESIGN DEVELOPMENT
2	5/13/19	SCHEMATIC DESIGN
1	4/8/19	SCHEMATIC DESIGN

COMPUTER DRAWING

DATE: AUGUST, 2019
 DRAWN BY: CK CHECKED BY: DR

SHEET

E3.1
 OF 1 SHEETS



Integrated Consulting
 Engineers, Inc.
 319 South Hydraulic • Wichita, KS 67211
 316.261.5288 • 316.261.5948 • www.icengr.com

1915.00-107